

KOSO INTRODUCTION



Contents

1. KOSO

- Global Network
- Company History
- Capability

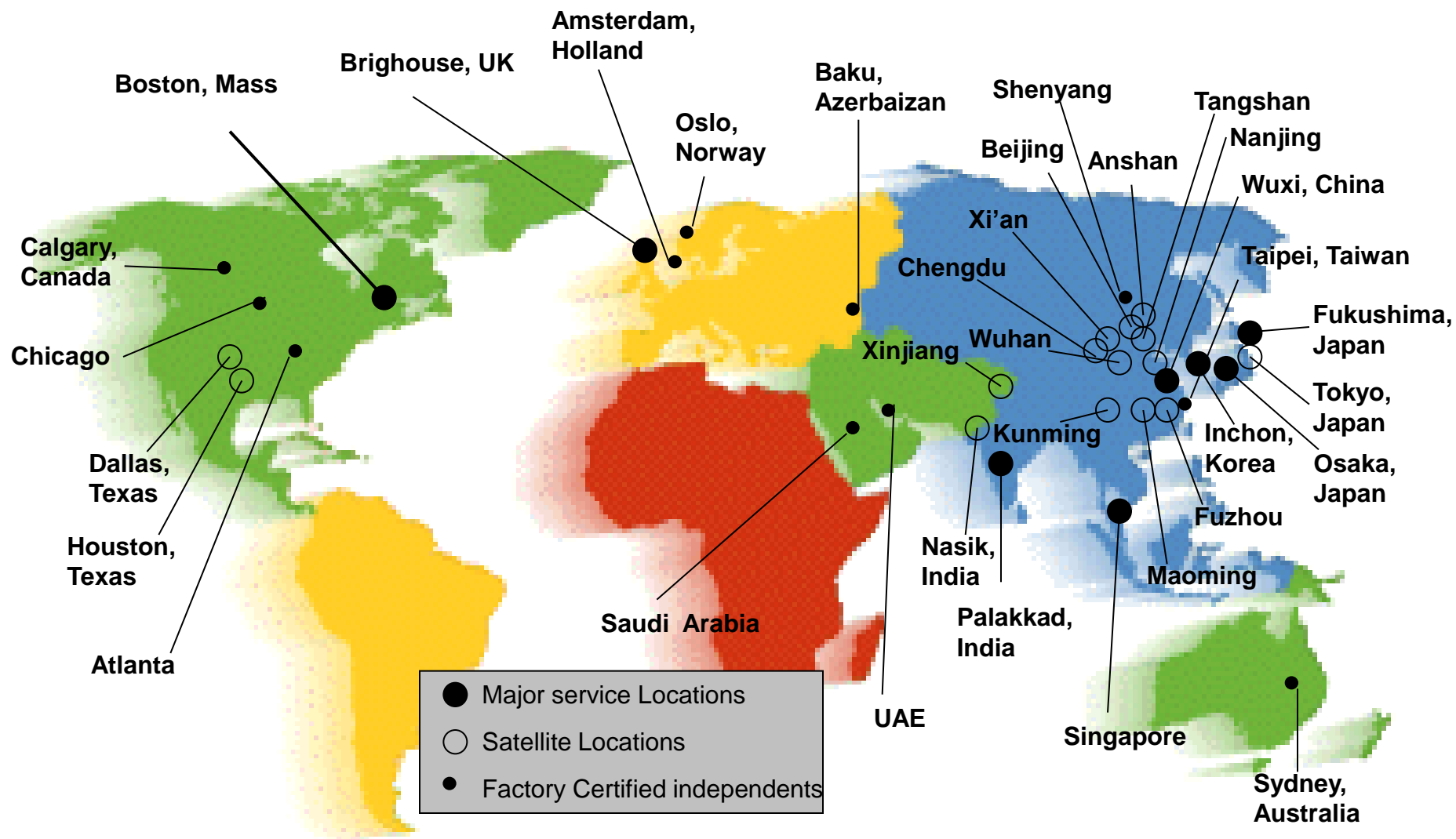
2. KOREA KOSO

- Vision & Mission & Core value
- Organization Chart
- Business Challenges
- Results of Business Challenges
- Long-term Strategy Tasks
- Recruit process

3. Q & A



1. KOSO - Global Network



1. KOSO - Global Network

Japan – Tokyo Koso Co., Ltd. (factory)



ISO 9001 Certified
ISO 14001 Certified



PED Certificate



GOST Certificate

- Fukushima, Japan
- Main products: Control valves/actuators and pneumatic devices

1. KOSO - Global Network

Korea – Korea Koso Co., Ltd. (Inchon factory)



- Incheon, Korea
- Main products: Control valves/Actuators

1. KOSO - Global Network

North America - Rexa & Hammel Dahl (factory)



- West Bridgewater, Massachusetts, United States
- Main products: Hydro electronic actuators

1. KOSO - Global Network

Europe - KOSO Kent Introl Ltd. (factory)



- Brighthouse, United Kingdom
- Main products: Control valves/choke valves

1. KOSO - Global Network

China – Wuxi factories

ISO 9001 Certified



- Wuxi – first factory established in 1993
- Main products: Control valves/linear motion



- Wuxi – second factory established in 2007
- Main products: Control valves/rotary motion

1. KOSO - Global Network

India - Kent Introl Private Ltd. (factory)



- Nashik, India
- Main products: Control valves/actuators and accessories



1. KOSO - Company history

- 1965: Company established as control valve manufacturer in Japan
- **1979: Established manufacturing company in Korea**
- 1986: DRAG® technology license with Control Components Inc.(USA)
- 1987: Established manufacturing & foundry in China
- 1993: Acquired Rexa Inc. hydraulic actuators, USA
- 2001: Established Koso manufacturing in India
- 2002: Acquired Hammel-Dahl valves, USA
- 2005: Acquired Kent Introl choke & control valves, UK
- 2008: Received PED, ATEX and Gost certifications
- **2010: Established new manufacturing factory in Masan, Korea**



1. KOSO - Capability

- \$400 million annual sales
- 1500 employees
- More than 40 years of experience
- Installed base +500,000 valves worldwide
- Installed base +30,000 severe service valves worldwide
- Installed base +17,000 high-tech self-contained E-H actuator systems
- Factories in Korea, China, UK, USA, India, Japan
- Own foundries in China & India

2. KOREA KOSO - Mission & Vision & Core value

Why does KOREA KOSO exist?





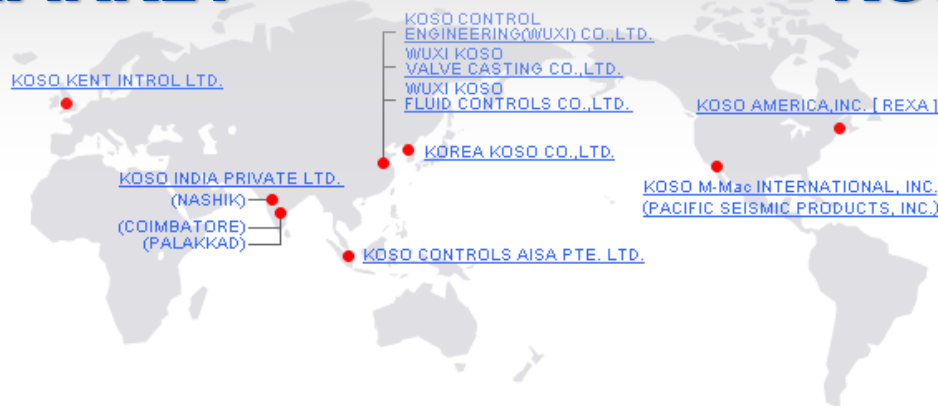
2. KOREA KOSO - Mission & Vision & Core value

What is the future of KOREA KOSO?

LEADING COMPANY

KOREA MARKET

KOSO GROUP



2. KOREA KOSO - Vision & Mission & Value

Which kind of standard does all KOREA KOSO staffs work?

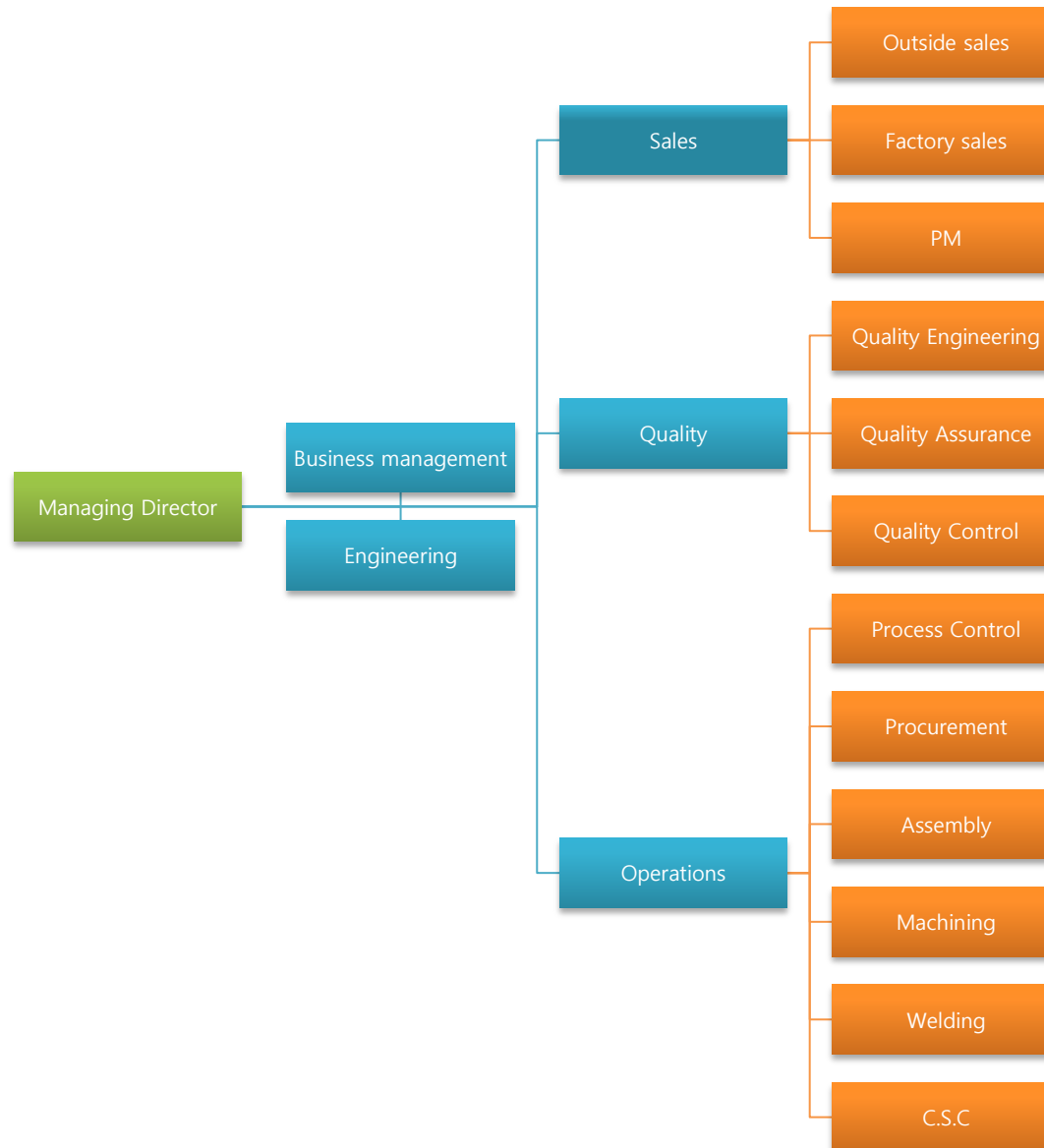


최선을 다하지
않으면서
최고를 바라지 마라

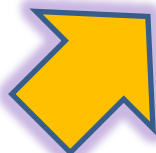




2. KOREA KOSO – Organization chart



What is our business challenges to achieve the vision?



New and challenging design & manufacturing requirements



International collaboration to win the business

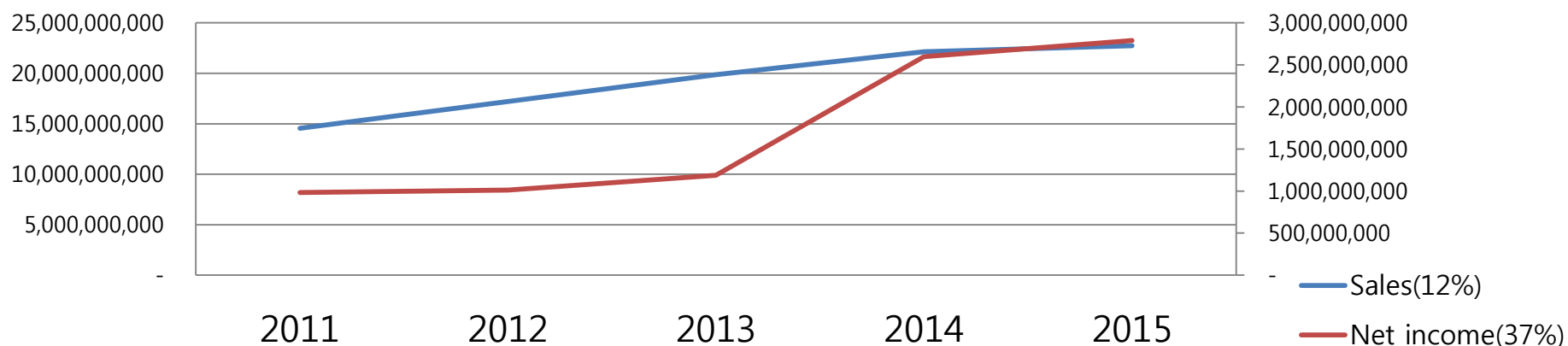


The most cost effective valve solutions

2. KOREA KOSO - Results of business challenges

What is the results of business challenges?

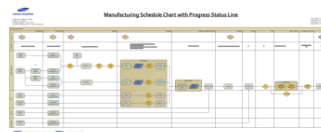
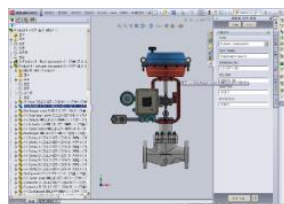
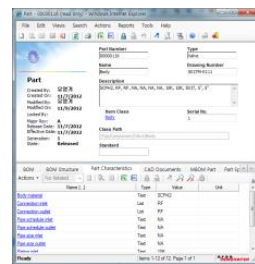
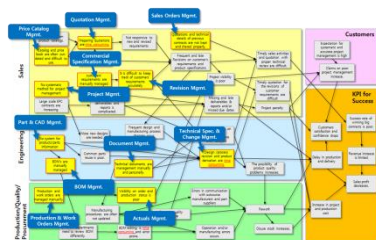
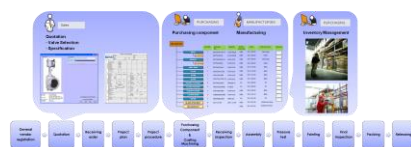
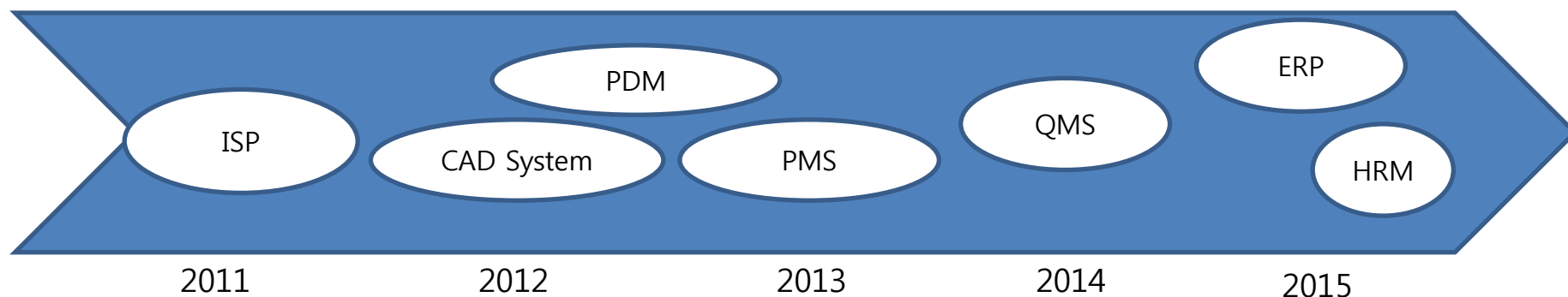
SALES & NET INCOME



2. KOREA KOSO - Results of business challenges

What is the results of business challenges?

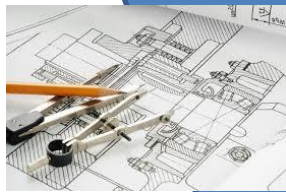
MANAGEMENT SYSTEM



2. KOREA KOSO - Results of business challenges

What is the results of business challenges?

DESIGN & MANUFACTURING



Engineering
team
establish

Trim
design

Forged body
design

Disk stack
design

Disk stack
manufacturing

Clean valve
manufacturing

Rotary valve
manufacturing

Gate valve
manufacturing

Anti-surge valve
manufacturing

2011

2012

2013

2014

2015



2. KOREA KOSO - Long-term strategy tasks

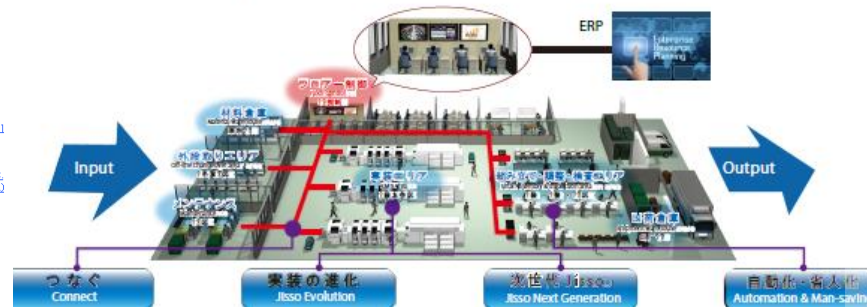
FACTORY MOVEMENT

What is the long-term goal?



Smart Factory Solution

Contribution to increase the customers value by harmonizing IT and machines, in order to realize higher productivity, higher quality and man-saving solutions



Made in Korea

Severe Service valves
General Service valves
Clean valves
Desuperheater valves
Let down valves
ANTI surge valves
Joule tomson valves

Engineering Groups

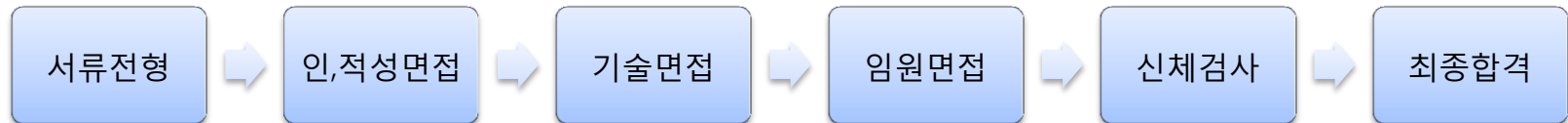


Human resource development



The most cost effective valve solutions

2. KOREA KOSO - Recruit



Q & A